

2017 E2C Point Stats

24 Hour Teams, number of times a point was visited:

- Average 24 Hour Team Punched 32 flags
- Three (3) Teams Cleared all 60 flags
- PT 214 and PT 215 were visited the least amount of times at six (6)
- PT 262 (Start Finish) was visited the most amount of times at Thirty-Five (35)
- PT 139, 225, 226 were visited Thirty-Two (33) times
- 44 Punch Cards logged

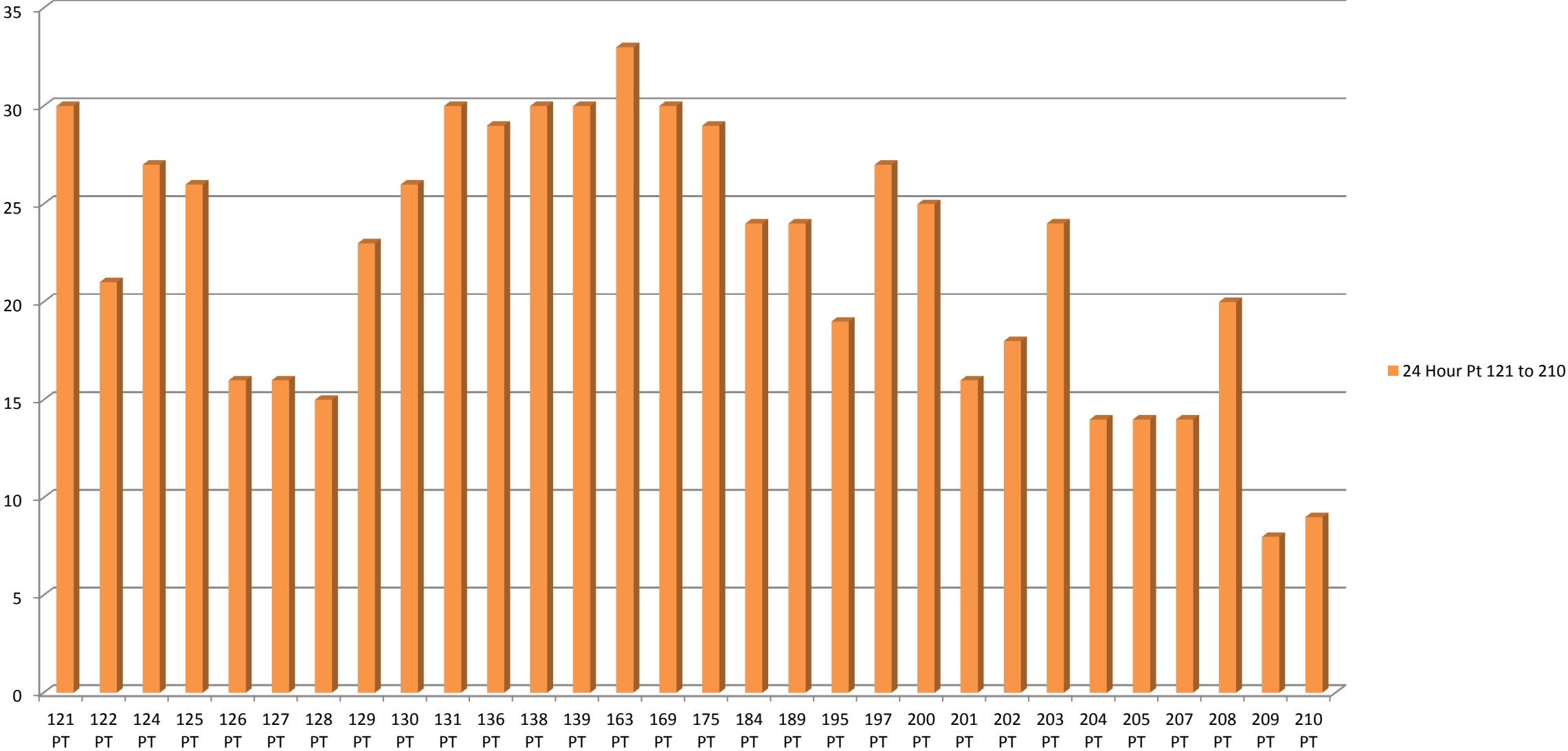
8 Hour Teams, number of times a point was visited:

- Average 8 Hour Team Punched 13 flags
- PT 217, 219, 226 were visited the least amount of times at one (1)
- PT 262 (Start Finish) was visited twenty-six (26) times
- PT 203 was visited forty (40) times
- 70 Punch Cards logged

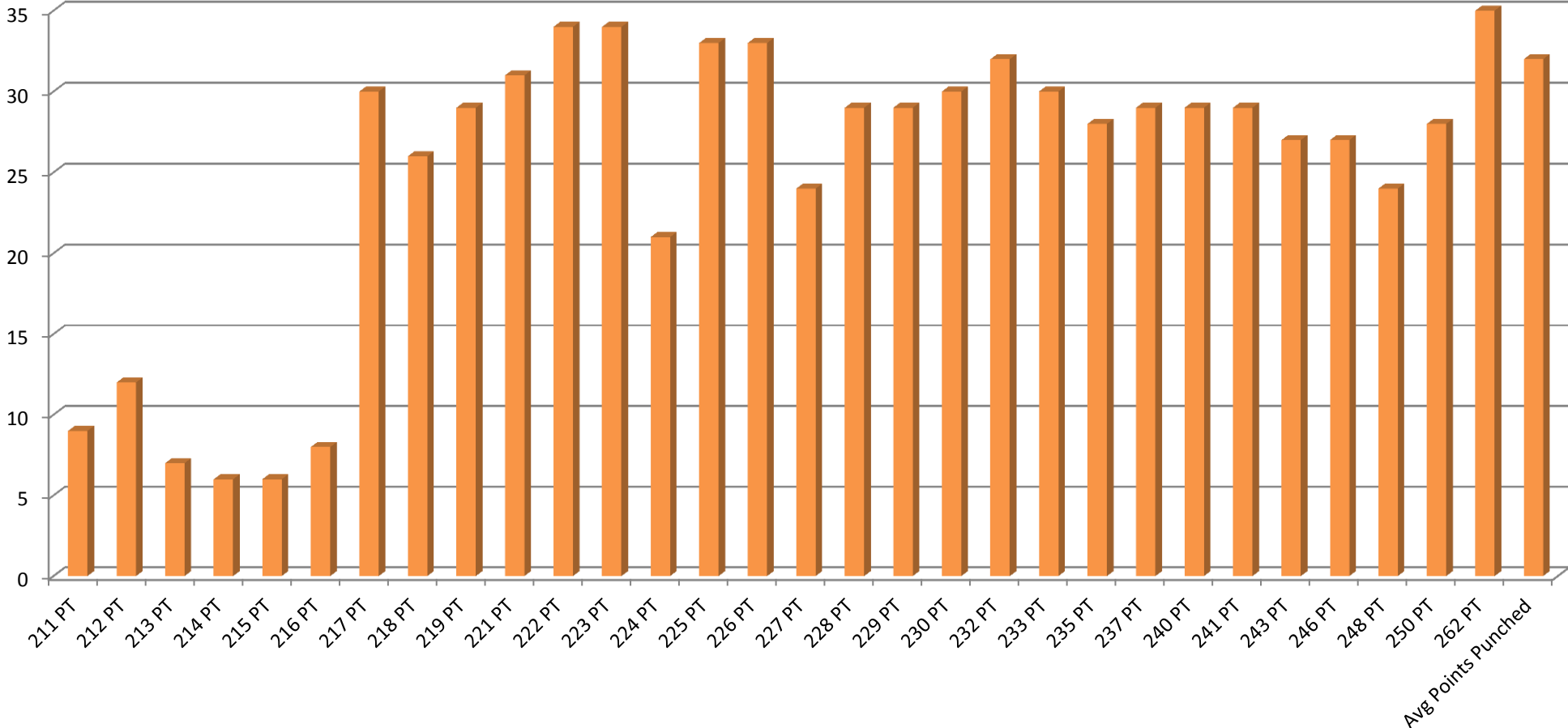
Combined Stats, number of times a point was visited:

- Average Team Punched 23 flags
- PT 224 was visited the least amount of times at twenty-three (23)
- PT 262 (Start Finish) was visited sixty-one (61) times
- PT 203 was visited sixty-four (64) times
- 113 Punch Cards logged

24 Hour Pt 121 to 210

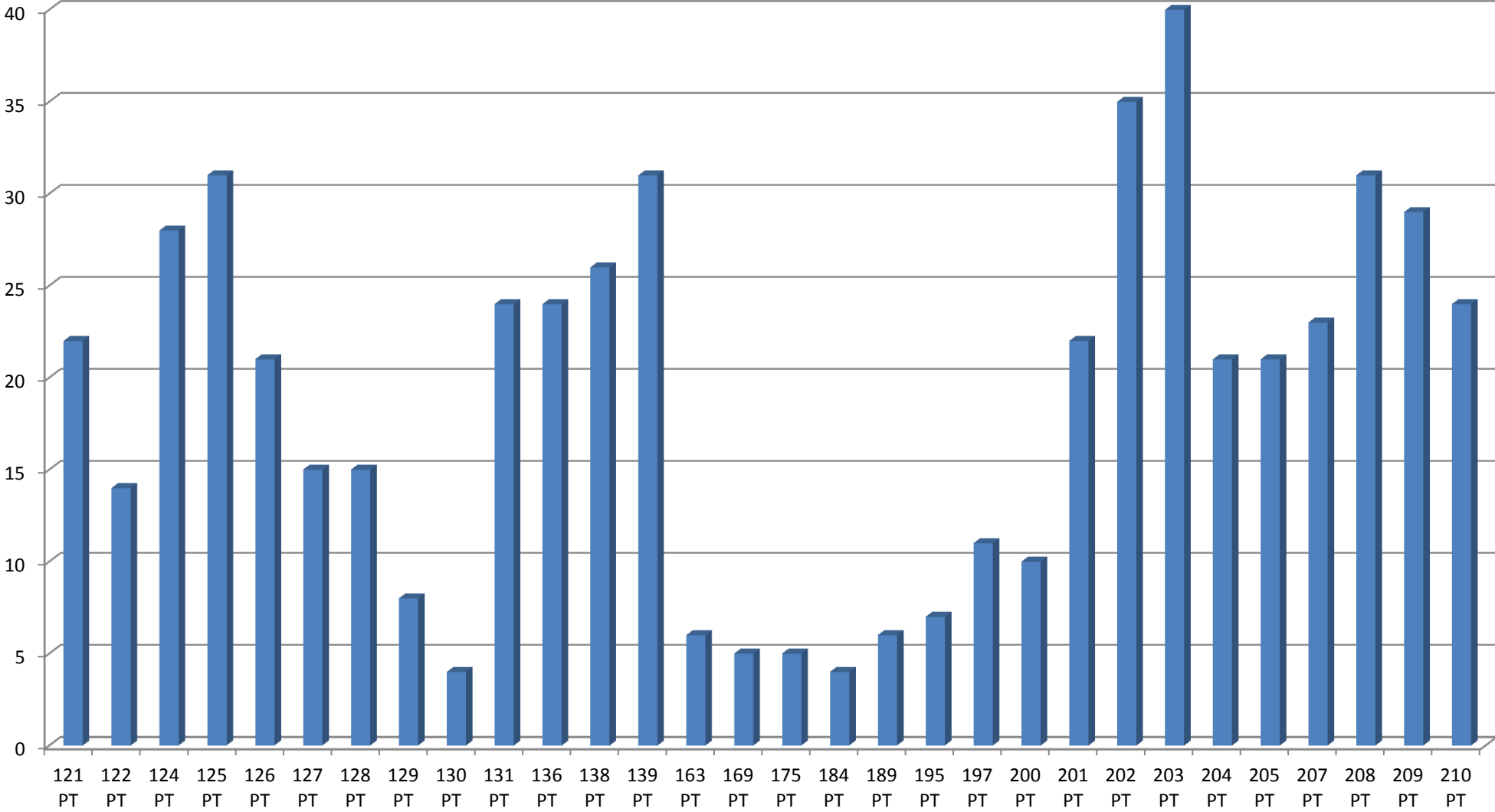


24 Hour PT 210 to 262



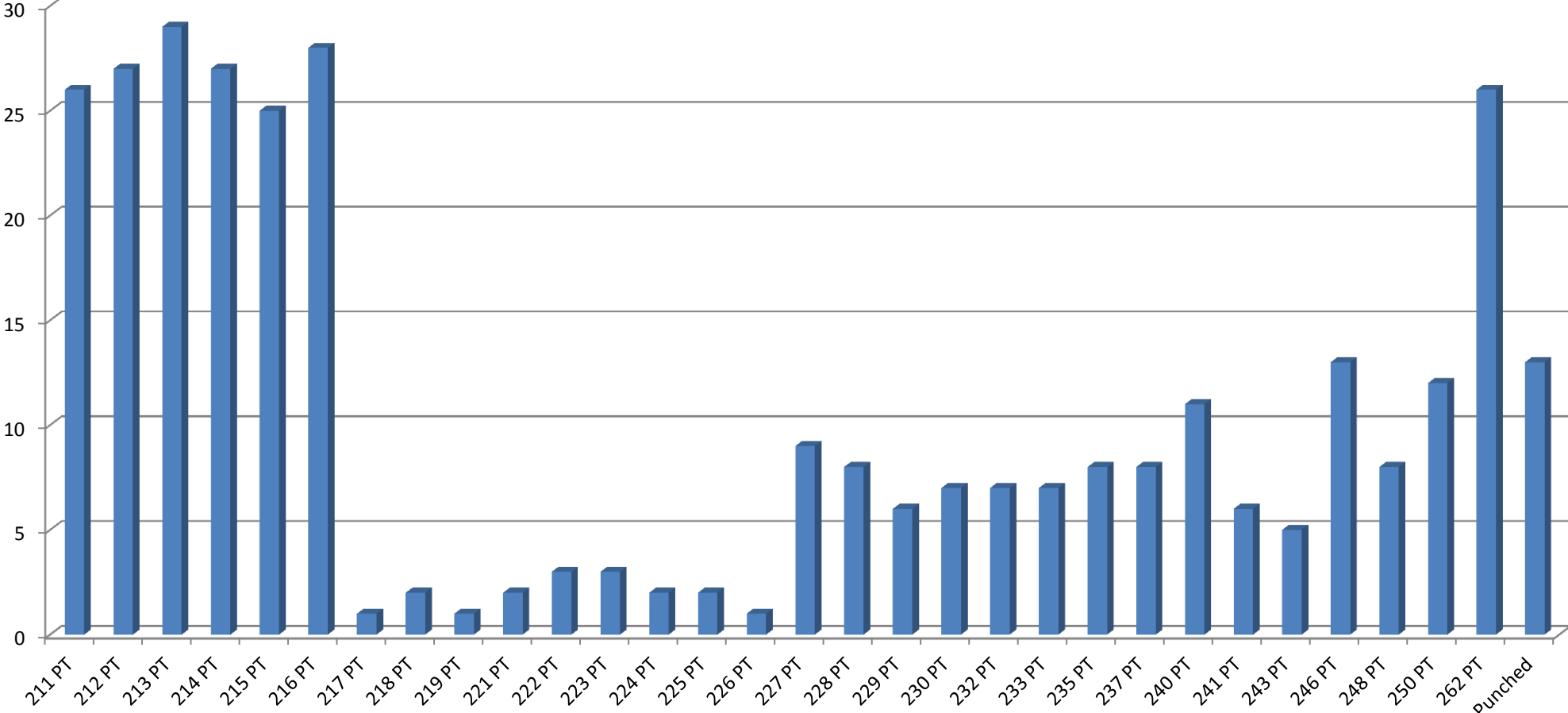
24 Hour PT 210 to 262

8 Hour PT 121 to 210



■ 8 Hour PT 121 to 210

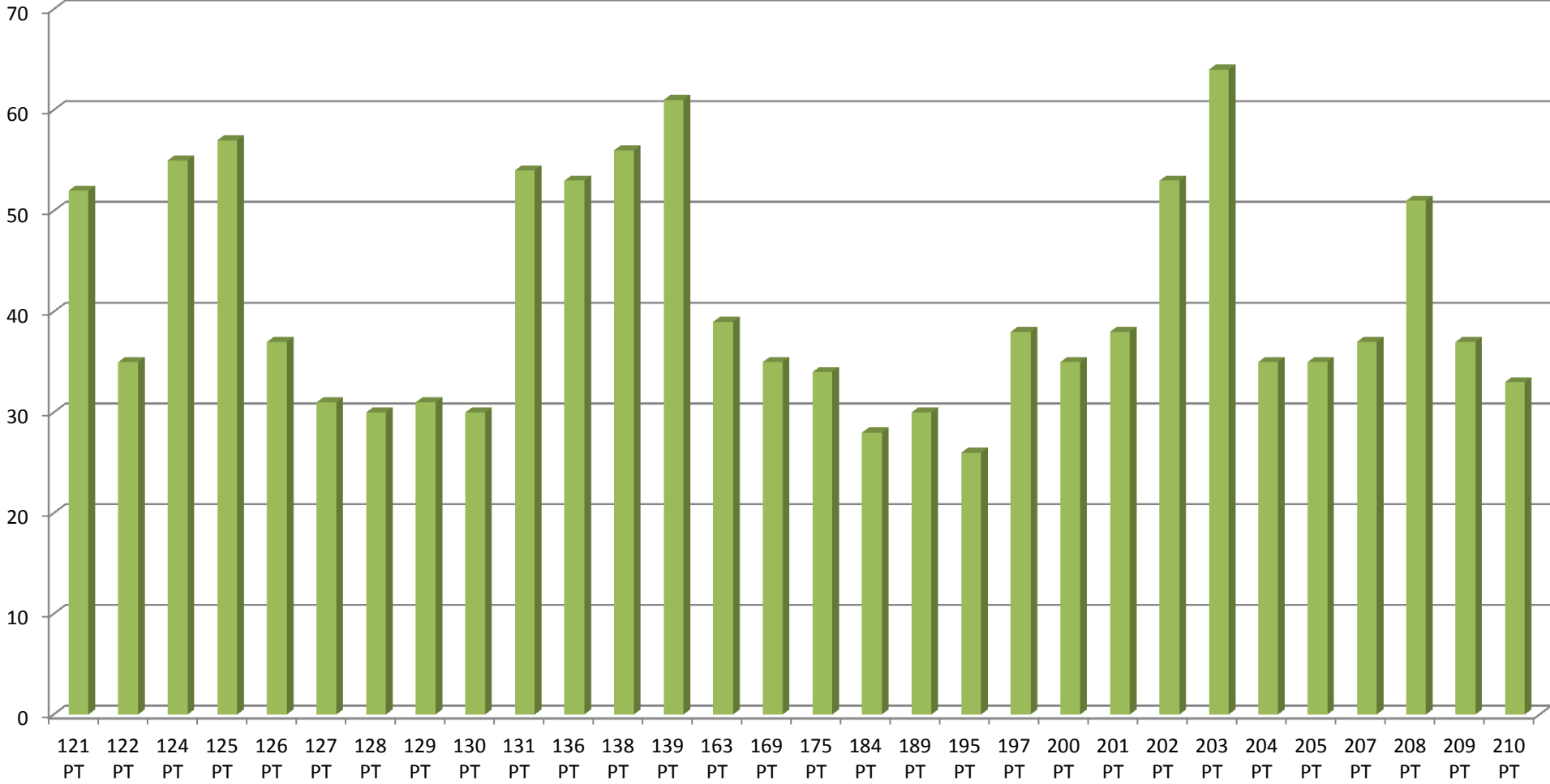
8 Hour PT 210 to 262



■ 8 Hour PT 210 to 262

Avg Points Punched

Combined Stats PT 121 to 210



■ Combined Stats PT 121 to 210

Combined Stats PT 211 to 262

